

The Communicator

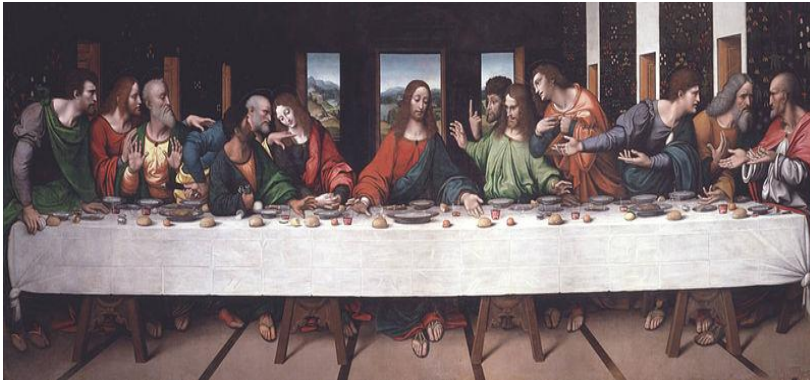
Strengthen Faith
Serve Others * Share Christ

MONTHLY ISSUE

"FEEDING THE BODY, MIND AND SPIRIT OF THOSE IN OUR COMMUNITY"

APRIL 2012

COMMUNITY LUTHERAN CHURCH HOLY WEEK SCHEDULE



April 1 st Sunday	Passion/ Palm Sunday 8:30 am Worship with Holy Communion 9:45 am Faith Formation for All Ages 11:00 am Worship w/ Holy Communion
April 4 th Wednesday Evening	6:00 pm Lent Soup & Bread Supper 7:00 pm Lent Program "Meet Judas," who walked with Jesus" (Portrayed By: Pastor Bernie Hess)
April 5 th Maundy Thursday	7:00 pm "The LIVING Last Supper" (Portrayed By: CLC Men & Women)
April 6 th Good Friday Prayer Vigil & Tenebrae Service	9:00 am Prayer Vigil begins at 9:00am and ends at 7:00 pm 7:00 pm Office of Tenebrae Service (Latin word for Shadows)
April 7 th Saturday Evening Easter Vigil	6:30 pm Easter Vigil (New Members will be Received)
April 8 th EASTER SUNDAY	7:00 am Sunrise Service 10:00 am Easter Worship Service



COMMUNITY
Lutheran
Church

Telephone: 336-643-7667

Worship Schedule

Saturday Community Worship: 6:30 pm
Sunday Early Worship: 8:30 am
Faith Formation Classes: 9:45 a.m.
Sunday Late Worship: 11:00 a.m.

All Are Welcome in Worship

*"Every creature of God is good,
and nothing to be refused, if it be
received with thanksgiving."*

—1 Timothy 4:4

As a Community based congregation, we affirm that all are welcome in worship here no matter what age or life circumstance.

Our Mission

We believe God calls us to live our Christian life together as we strengthen faith, serve others, and share Christ.

We welcome all to strengthen faith by learning to live Christ-like lives; to serve others through giving, caring and loving; and to share Christ through worship and witness.

About Us

Our outreach is strong and committed, but for all the evangelism in which we engage, none is as important as the way we worship and open our church to visitors and guests. So we concentrate on warm, inviting worship, children's time each Sunday, rich music in several formats, the dignity and tradition of the Lutheran heritage, and celebration of the Sacrament of Holy Communion at all our services. We hope the result is not merely a congregation that is friendly, but a family that truly reflects the warmth and grace of Jesus.

Our Next Newsletter: MAY 2012

Deadline: Wednesday, APRIL 18

Community Lutheran Church is a congregation of the Evangelical Lutheran Church in America



COMMUNITY Lutheran Church

4960 U.S. Highway 220 North
Summerfield, NC 27358
Phone: 336-643-7667
www.communitylutheranchurch.org

The Rev. Bernard Hess, Pastor
Epibunigar@triad.rr.com
Cell Phone: 336-501-2841

Ms. Valerie Lepko, Director of Music
vlepk@yahoo.com

Mrs. Janet Weitz, Admin. Assistant
clccchurchoffice@bellsouth.net

Publications Submissions

Weekly Announcements, &
Communicator Articles:

Send all submissions to:
clccchurchoffice@bellsouth.net

Weekly Announcements:
Please submit by 12:00 pm each
Wednesday

**Communicator Articles & Calendar
Events:**

Please submit by the 3rd
Wednesday of the Month.

Ministries

- Bible Study
- Children's Choir
- Chancel Choir
- Confirmation
- Eucharistic Ministry
- Faith Formation
- Ladies Ensemble Choir
- Praise Band
- Prayer Shawl Ministry
- Vacation Bible School
- Women's Group
- Youth Ministry

Social Outreach

- Blood Drive
- Greensboro Urban Ministry
- GriefShare
- Refugee Resettlement
- Senior Moments
- La Vela Latino Center
- Tabitha Ministries
- Weaver House

Fellowship

- Book Club
- Celebration Receptions & Meals
- Chili Cook-Off
- Church Picnic
- Fellowship "On the Road"
- Lenten Soup & Bread Meals
- PEP Groups



PASTOR'S REFLECTIONS

APRIL 2012

It has been a powerful Lenten Journey for me. Two days after our Ash Wednesday Service, I experienced surgery to replace my left knee. The surgery went very well. I finished in-house physical therapy at Maryfield. As of this writing (March 19, 2012) I am doing out-patient therapy, and am gradually working my way back to full participation in Christ's ministry through Community Lutheran Church.

You have much time to pray and reflect on the Lord's direction for your life. You literally have to come to a total life review. You take the **journey of Lent with Jesus as your guide to Jerusalem, the Cross, and living in the hope of resurrection and Easter.** I hope that you also have used this Lenten period to reflect on your life and deepen your commitment to Christ.

You have been a tremendous support during this wilderness journey, through your cards, prayer shawls, visits, and telephone calls. The Council voted to continue giving me my salary during this time of surgery and rehab while absorbing the costs of providing supply pastors. The men of Bible and Biscuit came to Maryfield for one of their sessions so I could participate. I have even had drivers to get me to my first week of out-patient therapy.

Many of you stepped up and led our Wednesday Evening services presenting Jesus' disciples. The adult Sunday School studying the book of Acts has continued. Judy Arthofer took Brady Faggart's sermon research, after he had a near fatal car accident, and preached a great sermon. Steve Rhodes also led worship.

My mother-in-law drove me to worship at Community on March 18th and I discovered new families worshipping and participating in our parish life. They are of all ages. God is sending new people our way from families with children to those who are single, or have been Christians a long time. I expect to be leading worship starting this weekend (March 24 & 25). We will be receiving new members at the Easter Vigil, Saturday April 7th at 6:30 pm. All are invited to this service to recommit our lives to Christ and celebrate the Easter He brought into our lives through Holy Baptism.

There is one area of concern I have as I return, our offerings have not kept pace with expenses. Each of us needs to regularly reflect with the Lord over how much they are regularly able to give. I find that giving 10% of your income first to Christ through the Church is a great place to start.

Whatever you give it needs to be regular, whether you were able to attend worship or not, on a particular weekend. As we all give as the Lord guides us, God will bring the harvest.

Let's take a few moments to review what is planning for Holy Week. This is the most important week of the Church Year. Because of this, there will be several special worship experiences. On **Palm Sunday, April 1st** we will gather in the Memorial Garden if the weather is dry to do a Palm Processional into the Church, recreating the Sunday when Jesus rode into Jerusalem to suffer, die, and rise again the next Sunday, Easter. The mood of the worship will gradually shift from excitement of a parade to why Jesus came to Jerusalem to die. Our next service will be on **Wednesday, April 4th at 7:00 pm**. We will have a chance to meet Judas. **Thursday, April 5th at 7:00 pm**, the **Living Last Supper will be presented**. Men and women of the church will recreate Jesus celebrating Passover with his disciples the night before his death. **Friday April 6th Good Friday. A day of commemorating the death of our Lord.** The day will begin with a Prayer Vigil. The church will be open all day for prayer and reflection. There is a signup sheet for members to assist in this effort that will conclude with **Office of Tenebrae at 7:00 pm. (Latin word for Shadows)** With scripture readings, hymns, and extinguishing of candles we will remember of suffering and death of our Lord, Jesus. This service concludes in darkness and we leave the church in silence. On **Saturday, April 7th at 6:30 pm at the Vigil of Easter** we will begin to celebrate the resurrection of our Lord by entering the church with singing and the lighting of candles from the

Paschal Candle. We will recall our own death and resurrection that happened through the waters of Holy Baptism. We will celebrate some of God's mighty deeds starting with creation and culminating with Jesus' death and resurrection. All of us will be given an opportunity to recommit our lives to Christ as our new members make their commitment to him and join in our fellowship at Community.

The next day we will celebrate our Lord's Resurrection with a 7:00 am worship followed by Easter Breakfast and worship at 10:00 am.

Taking this journey with us, can change your life and deepen your commitment to Jesus. Be blessed.

*Shalom;
Pastor Bernie*

"The Living Last Supper"

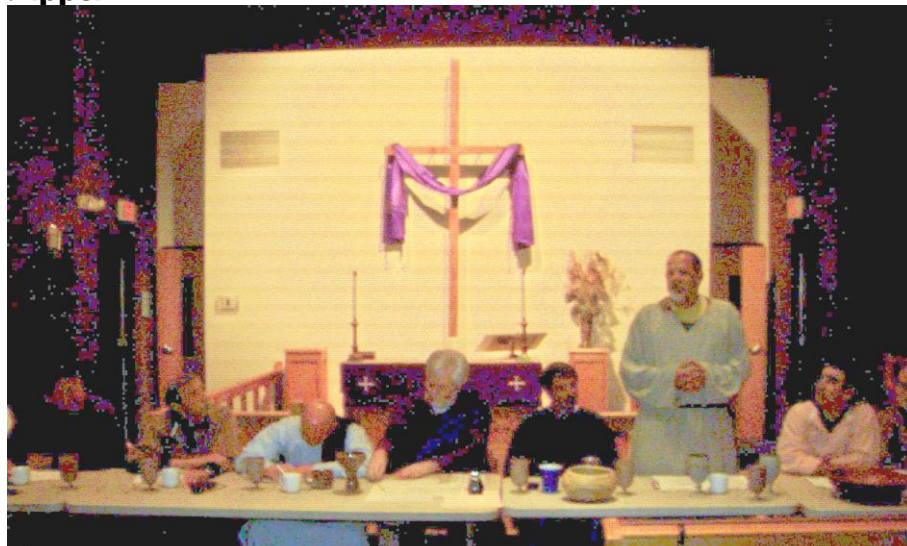
(Two presentations)

"The Living Last Supper" will once again be presented during Holy Week, following a year of absence. The men of CLC will be having two presentations. The first, on Monday April 2nd at Flat Rock United Methodist Church, Stokesdale and, the second on Maundy Thursday, April 5th here at Community. Both Presentations will begin at 7:00 PM. Responses in the past have been most encouraging for us to again bring this message of the Last Supper in this different but profound format.



Dress Rehearsal for the Living Last

Supper





Prayer Vigil

Good Friday (April 6th) will be a day that the Sanctuary will be open to anyone wanting to participate in a **Prayer Vigil**. This will be an opportunity to reflect on the sacrifice of our Lord, as He suffered and died on the cross for all mankind. Reference material will be available for use during this most pensive period of soul searching and reflection. Please share this information with friends, relatives or neighbors who may also want a place of quiet solitude at this time.

The Sanctuary will be open from 9:00 AM and will stay open until the last person departs follow the completion of the Service of Shadows that evening. We will need to have someone here during this period to assist with distribution of materials, etc. There is a sign-up sheet available in the fellowship hall for those willing to be of assistance. Increments of 15 minute periods are set up and you may indicate as many consecutive periods as you desire.

Council Highlights

Monday, March 19, our council met for its monthly meeting. As always our meeting was filled with a lot of energy and commitment!

We began our meeting with a devotion and prayer. We also shared spiritually meaningful times in our individual and corporate lives as the body of Christ. Some of those times have been our Wednesday evening Lenten services and the Ash Wednesday service.

Our membership is now complete with nine members! Our council appointed and welcomed Dennis Carignan to fill the vacant position! He will serve until our annual meeting and then be up for election for the remaining two years of his position. Dennis will serve as the liaison to the Worship and Music Team.

Here are other highlights of our meeting:

Each month we will once again invite one of our teams to attend our meeting as a way of hearing what that team is doing and learning how council can support that team.

- **We discussed our need as a congregation to “stretch” ourselves in giving so that we can build up to full time ministry.** We have made good progress by once again having office help and an accompanist and we do not want to lose this momentum.
- **Progress on our goals for this year (“Share the Harvest” and “Feeding ALL people –body, mind, and spirit”) were reviewed.** Our role as a drop-off location for garden produce will begin sometime in May.

- **In our visioning process, one of the things we reviewed was our mission or purpose statement** of “Share Christ, Serve Others, Strengthen Faith. **In looking at where we are headed as a missional congregation and who we want to become, we decided that a rearrangement of that statement more accurately describes our purpose and our process for growing as disciples. Our mission or purpose statement will now be:**

Strengthen Faith, Serve Others, Share Christ

This reflects that transformation from the “inside out” that must happen in order to fully “serve others” and “share Christ”. A good example of how this is happening now is our service at Weaver House. We go, as people who have been strengthened in faith, serve dinner, and share Christ through the worship service that we offer! And, of course, the experience itself strengthens our faith and we begin again!

In Christ’s service,

*Judy Arthofer,
Council President*

Strengthen Faith

Serve Others

Share Christ

SHARE THE HARVEST

DONATE YOUR EXTRA HARVEST TO FIGHT HUNGER IN OUR COMMUNITY

“Quality produce from local gardens to families in need”.

follow us like us

www.sharetheharvestguilfordcounty.org

**FEEDING THE BODY,
MIND AND SPIRIT
OF THOSE IN OUR
COMMUNITY**

Share the Harvest Program

Food insecurity for a household is the lack of access to enough food for an active healthy life. In Guilford County, more than one out of four children lives in a household with food insecurity, which means they do not know where they will find their next meal. Food insecurity includes at a minimum:

- The ready availability of nutritionally adequate and safe food.
- Assured ability to acquire acceptable foods in a socially acceptable way, that is, without resorting to emergency food supplies, scavenging, stealing, or other coping strategies.

Share the Harvest program now has a way of getting fresh produce to those in need. Collection sites have been set up across Guilford County to make it convenient for local gardeners, willing to share, to drop off fresh produce. With the help of Greensboro Urban Ministry, Triad Urban Ministry, Servants Center, and the High Point Salvation Army, the food will be collected and distributed to those who are hungry in our community.

Community Lutheran Church has agreed to serve as a drop off site for the Summerfield, Oakridge, and Stokesdale communities. We will collect the fresh produce at the church on Sundays from 1: 00 pm to 4:00 pm each week (Mid March thru October, dates to be announced). We will then store the produce, to be picked up on Tuesdays by Urban Ministry, and taken to the Interactive Resource Center for distribution.

Help is needed. Our goal is to make sure that this fresh produce is not going to waste and that every donation, no matter how small or large, will go to feed someone. Please Contact Dick Howard @ 336-298-4490 or 336-706-0745 if you would like to help with this new project.

More on becoming a “missional congregation”...

Last month the first in a series of articles about becoming a missional congregation appeared in this newsletter. Here is the next “installment” of becoming a missional congregation:

- The missional church understands that God is already present in the culture where it finds itself. Therefore, the missional church doesn't view its purpose as bringing God into the culture or taking individuals out of the culture to a sacred space.
- The missional church is about more than just being contextual, it is also about the nature of the church and how it relates to God.
- The missional church is about being -- being conformed to the image of God.
- The missional church will seek to plant all types of missional communities.
- The missional church is evangelistic and faithfully proclaims the gospel through word *and* deed. Words alone are not sufficient; how the gospel is embodied in our community and service is as important as what we say.
- The missional church understands the power of the gospel and does not lose confidence in it.
- The missional church recognizes that it does not hold a place of honor in its host community and that its missional imperative compels it to move out from itself into that host community as salt and light.²

- The missional church will align all their activities around the [missio dei](#) -- the mission of God.
- The missional church seeks to put the good of their neighbor over their own.
- The missional church will give integrity, morality, good character and conduct, compassion, love and a resurrection life filled with hope preeminence to give credence to their reasoned verbal witness.
- The missional church practices hospitality by welcoming the stranger into the midst of the community.
- The missional church will always be in a dynamic tension or paradox between missional individuals and community. We cannot sustain being missional on our own, but if we are not being missional individually we cannot sustain being mission-shaped corporately.³
- The missional church will see themselves as representatives of Jesus and will do nothing to dishonor his name.
- The missional church will be totally reliant on God in all it does. It will move beyond superficial faith to a life of supernatural living.
- The missional church will be desperately dependent on prayer.
- The missional church gathered will be for the purpose of worship, encouragement, supplemental teaching, training, and to seek God's presence and to be realigned with God's missionary purpose.
- The missional church is orthodox in its view of the gospel and scripture, but culturally relevant in its methods and practice so that it can engage the world view of the hearers.
- The missional church will feed deeply on the scriptures throughout the week.
- The missional church will be a community where all members

are involved in learning "the way of Jesus." Spiritual development is an expectation.

- The missional church will help people discover and develop their spiritual gifts and will rely on gifted people for ministry instead of talented people.
- The missional church is a healing community where people carry each other's burdens and help restore gently.
- The missional church will require that its leaders be missiologists.

Now that's a long description! Take a few descriptors at a time and “chew” on them! See where CLC fits and where we need to grow (as individuals and as a congregation)... we are always growing!

ELCA NEWS



Kat Heavner spent a year as an ELCA young adult volunteer.

Kat Heavner rarely had a free minute when she lived in Cuernavaca, Mexico. When she wasn't teaching English to preschool and elementary students, she was preparing lunch at a community center for senior citizens or helping with a dance class, among other things.

(Continued on page 7)

(Continued from page 6, ELCA NEWS)

That's exactly what Kat, from Clemson, S.C., was looking for when she decided to spend a year as an [ELCA young adult volunteer](#). She didn't want to just visit. She wanted to dig in deep, explore her faith and be open to new experiences that came her way.

Granted, there were challenges. Kat worked in communities struggling with poverty and domestic violence. She often felt pushed beyond her comfort zone.

But what Kat discovered was that the greatest gift she could offer to the people she met was just to sit with them and "listen to whatever they felt they needed to share with me."

Heidi Torgerson-Martinez, the [ELCA](#) churchwide staff member who directs young adult volunteers working in other countries, says that the way Kat approached her year of service is exactly what the young adult program is about.

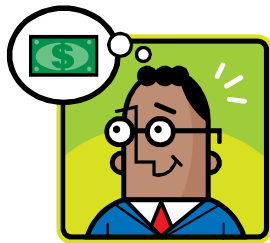
"Our volunteers are asked to meet people where they're at, to learn the daily joys and struggles of each individual's story. ... (They) are challenged to enter into the whole world of people from whom our volunteers tend to be very different."

Kat says she learned a lot of patience and how to have a conversation in the absence of a shared language.

It's the small moments she'll always treasure and remember.

"When I sat sharing a bottle of Coca-Cola with a woman as she told me about her home life, or struggled to

learn a new embroidery stitch from an 80-year-old man, or just watched children playing soccer, I thought, 'That was when I was with you the most.'



Treasurer's Talk

This section is new and will appear regularly in the Communicator.

The goal is to keep the congregation better informed on our financial situation and progress. As everyone knows, last year was probably our most challenging year to date. A lot of effort had to be put forth, and a lot of people had to come together in order for CLC to "turn the corner" both financially and spiritually. We as a congregation did put forth that effort and have turned that corner. Have you witnessed any changes within our church? Can you feel the spirituality in the room growing? It has been a personal goal of mine, and supported by council, to put less focus on the money issues at Community Lutheran and instead, focus on the spirit. Why are we here? What is our mission? Should finances be a major part of our focus, or should we be focusing on how we can better serve God, one another, and our community? I don't think I need to answer this question. The phrase from the movie [Field of Dreams](#) comes to mind. "Build IT, and they will come".

With that said, it is still important to be good stewards of our finances. In this issue of the Communicator, I would like to bring everyone up to date on how we did in 2011. For the year, offerings totaled \$164,864. This was right in line with the projected amount of \$165,000. Our actual expenses for the year totaled \$171,084. The shortfall for 2011 was (\$6220). During the first 6 months of 2011, we had run up a deficit of over \$15,000, or \$2500 per month. Our checkbook was in the red (when considering the liabilities owed), there was talk about selling or walking away from our building, and one could literally see the despair written on people's faces. At the rate we were going, we would have finished 2011 over \$30,000 behind and no church building to worship in. Yet we only finished \$6220 behind, and \$6155 of this could be attributed to the severance package we offered Pastor Gary. Let's also not forget, we had the unexpected \$4500 expense in having to replace an air-conditioning unit. So when you look deeper into the numbers, even after paying out severance, we were able to reduce our deficit by \$8851. That's almost a \$24,000 difference in a half of year. Yes, it did come with tough sacrifices. Yes, we did lose some families. Unfortunately, that was going to happen regardless of which road was taken. We must trust in God, and that it was His will that steered the ship in that direction.

(Continued on page 8)

(Continued from page 7, Treasurer's Talk)

I look back and contemplate the timing of those events. Some folks felt things went too slow, some folks felt things were being rushed along too quickly and that we should have given it more time. You do realize that there's only one person who truly knows what the correct timing is? We should feel blessed that God was kind enough to provide us the strength, the leadership, along with the will and support of our congregation, to have it all come together as it did.

For if it was any other time, earlier or later, Pastor Bernie would not have been available to us. We were in great need of leadership and an uplifting spiritual environment. From what I've witnessed and have heard, Pastor Bernie is filling that need. Also, regarding Pastor Gary and his future, the timing was perfect in that there became an opening for a pastor, and of all places, in Kure Beach! The first thing that came to my mind was that Pastor Gary's wife, Jeanette must have been thrilled when she heard the news, for she loves the beach! Now ask yourself this question, could it have turned out any better?

Nothing is going to be handed to us, but opportunities will be put in front of us and it will be up to us to make the most of them. Staying focused on our mission and goals, and being adaptive to change are our most important characteristics to maintain. We have a lot of work to do in 2012

and beyond, but as you can see, God will be there with us through our journey. I will report out on first quarter results in the next issue. God Bless you all,

Anthony Bravo, Treasurer

Stretching ourselves in giving!



Let's "stretch" ourselves! With God's help, we can do it! This illustration may look like torture, but when we respond in thankfulness for what God has done for us, giving becomes joyful – a spiritual act! If we, as a called body of Christ, want to return to full time ministry, this is what we must do.

We all are familiar with Jesus' story of the poor widow giving all she had – two coins. Author Rev. Peter Marty says, "It could be that she used her offering that day not to demonstrate to God the person she was, but to begin the process of becoming the person she wanted to be. In other words, we might ask ourselves, "Does my generosity reflect the individual I am, or does it trigger the character I would like to become?"

According to words in Jesus' best know sermon, it could be the latter. 'For where your treasure is, there your heart will be also' (Matthew 6:21). Jesus does not tell us that our treasure follows the path of our hearts. Instead, he indicates that our hearts typically follow the path of our treasure. Our spirituality is shaped by what we do with our possessions. The person we become is directly related to the unclenched fists with which we let go of wealth."

YOUTH LENS



Youth and their families met for lunch and planning after the 11a.m. service on March 18th. Many thanks to all who helped prepare the food. It was a great chance for families and youth to meet each other. Youth left very excited about participating in service projects. As a result, our next meeting will be to serve at Weaver House on April 21st. All youth are invited to join us, and we may catch-up with youth from Christ Lutheran Church.

Abria Vodenichar



CALLING ALL MEN OF CLC:

The Men of CLC have taken on the responsibility of cleaning the church on the third Monday of each month. Yes, that means we will expect you on Monday, APRIL 16th at 3:30pm.

Once the church is clean, all men are invited to socialize or recover from their cleaning experiences. We will attend a restaurant that serves FOOD AND BEER. Come one & come all!

Contact Dick Howard @ 336-298-4490 or 336-706-0745.



PICTORIAL DIRECTORY ...

Beginning in late APRIL, the Office Assistants will be working on a new pictorial directory. Pictures will be taken at the church. There will be no cost to members. All we need from you is to schedule a convenient time to take your pictures and for you to update any pertinent information.

If you would like to help us with this project, please contact Janet at the church office or email her at clchurchoffice@bellsouth.net

Thank-you



SPRING CLEANING TIME? MAY 5TH @CLC

If the warm weather we have recently been having has made you think of spring cleaning, the Women of Community have a suggestion and a request for you. Saturday, May 5, we will be having a yard sale to raise funds to help alleviate hunger in Summerfield, Oak Ridge and Stokesdale. This would be a great opportunity for you to rid yourself of unwanted or unused items that are in good condition and to assist locally at the same time. Because of our limited storage space, we ask that your donations be brought to the church anytime between Monday, April 30, and Friday, May 4, which is the week BEFORE the sale. In addition, crafts and baked goods will be available for sale. Your contributions to these are also welcome, so, start painting, knitting, sewing, beading or doing any craft you prefer and help make this fundraiser a success. Baking, of course, will be most welcome closer to the sale! If you have any questions, please contact Jackie Wiggers at 643-7535, Donna Hoekstra at 643-1089 or any other member of the Women of Community.



Once again your love and support with prayers, meals, cards, visits, phone calls, etc. were extremely helpful during my hospitalization and the following period of recovery. Mary and I are indeed blessed to be part of this wonderful family that we have found here at CLC. We pray that the blessings from all of us here at CLC will continue to be blessings to the many others that are in need, no matter where or who they may be.

With a grateful heart,

Ken Keith



A special thank you to all of the WOC AND CLC Men for keeping our building clean.

Thank you to Chris Heintl for keeping our grounds mowed and manicured and thank you, Randy Saxton for keeping the Memorial Garden beautiful. Dick Howard has recently pruned all of the bushes in front and on the sides of the church as well. Please give them a pat-on-the back. The pay is cheap but the rewards are great.

The Lorax

BOOK REVIEW

DR. SEUSS, AN AMERICAN WRITER AND CARTOONIST MOST WIDELY KNOWN FOR HIS CHILDREN'S BOOKS.

IN THIS TALE, DR. SEUSS TELLS THE STORY OF THE ONCE-LER, A VISIONARY ENTREPRENEUR, WHO USES NATURAL RESOURCES, TRUFFALA TREES, TO CREATE THNEEDS. WHILE THE ONCE-LER MAY AT FIRST GLANCE APPEAR TO BE NOTHING MORE THAN AN INNOVATIVE BUSINESSMAN, HE SOON GETS CAUGHT UP IN THE EXCITEMENT OF MAKING MONEY AND DESIRES TO 'BIGGER' HIS INDUSTRIAL BUSINESS. DESPITE DESPERATE WARNINGS FROM THE LORAX, A CREATURE WHO SPEAKS FOR THE TREES AND THE OTHER CREATURES, THE ONCE-LER CONTINUES TO GROW HIS BUSINESS AND FINDS OUT TOO LATE THE COST OF HIS GREEDINESS.

THE LORAX: REVIEW BY GRACE DUDDY

THE LORAX IS A COLORFUL AND IMAGINATIVE TALE THAT CAUTIONS THE READER OF THE PITFALLS OF THE SOCIETAL 'BIGGER IS BETTER' ATTITUDE. THE PRIMARY MESSAGE OF THIS BOOK CAN BE SUMMED UP IN THE CAUTIONARY WORDS OF THE LORAX 'UNLESS SOMEONE LIKE YOU; CARES A WHOLE AWFUL LOT; NOTHING IS GOING TO GET BETTER; IT'S NOT.'

THESE WORDS WHICH HAUNT THE ONCE-LER WILL ALSO CONTINUE TO HAUNT AND CHALLENGE ANY CAREFUL READER. THE LORAX CLEVERLY ILLUSTRATES THE IMPORTANCE OF COMMUNAL RESPONSIBILITY AND ENVIRONMENTAL STEWARDSHIP AS

WELL AS THE IMPACT, FOR BETTER OR FOR WORSE, THAT ONE INDIVIDUAL CAN HAVE ON THE WORLD.



CLC is currently seeking an angel to organize meals for our church family when in need due to a death in the family or hospitalization. There are many gracious souls in our congregation who eagerly help when such a need arises. Please let Fran Cabe, Carol Womble, Bob Arthofer or Bob Barnum know if God is calling you! Thank you to Mary and Ken Keith for organizing these meals in the past and to all the member of this church who so graciously help with this ministry.

OHIO STATE COLLEGE STUDENTS VISIT CLC

On Wednesday, March 21st, CLC hosted a meal for 20 Ohio State Students. These students were visiting Greensboro for two weeks to build a House for Habitat.

After a delicious meal was prepared and eaten, the students joined us for our Lent Program where we met, “Matthew who walked with Jesus”. This was presented by Bob Hoekstra. Thanks to all who prepared food, assisted with serving and clean up.



PUBLICATION SUBMISSIONS: PLEASE NOTE CHANGES!

Weekly Announcements, Communicator Articles and Calendar
please submit all to: clcchurchoffice@bellsouth.net

Weekly Announcements Deadline: Wednesday by 12:00pm

Monthly Events Calendar:
Submission Deadline: Third Wednesday of every month.
APRIL 18th is the next deadline.



Church Council

Judy Arthofer, President..... 643-2052
Katrina Weirick, Vice-President..... 545-1677
Tom Seaman, Secretary 295-3091
Anthony Bravo, Treasurer 298-3005
Dennis Carignan..... 643-0165
Marsha Lawrence..... 643-1877
Dick Howard..... 298-4490
Brian Page, Financial Secretary..... 665-9310
Traudl Shelton..... 299-6741
Tim Sronce..... 643-4499

Team Leaders

Fellowship *Volunteer Opportunity*
Finance *Volunteer Opportunity*
Worship & Music Enid Barnum
Outreach Ken Keith
Parish Education Abria Vodenichar, Bob Hoekstra
Property Jay Vodenichar
Social Ministries Joe Vodenichar
Stewardship *Volunteer Opportunity*
Youth..... Abria Vodenichar

Strengthen Faith * Serve Others * Share Christ